



CONTENTS

- 1.....President's Challenge
- 2.....Webster's Corner
- 2.....Executive/Committee
- 2.....Editor's Corner
- 3.....President's "Theme Challenges"
- 3.....Calendar of Events
- 3.....Mentor's List
- 4.....Friends of FVWG
- 4.....Classifieds
- 5.....Calendar of Meeting Dates
- 5 & 6CA Glue Article
- 6.....Buying a Woodturned piece.
- 7.....Minutes of Executive Meeting
- 8.....General News & Memo to persons who want that Instrument Maple,
- 9.....Pictures

The F.V.W.G. meets every **2<sup>nd</sup> THURSDAY** of each month of the school year at 6:30 p.m. We meet in the woodwork shop at the Yale Secondary School in Abbotsford (Old Yale Road & McMillan). Next meeting is **November 13<sup>th</sup>, 2003**.

Focus on Fundamentals will start at 6:30 PM. Paul Wiebe will discuss and demo Level 2-2, on sharpening and Ted Lightfoot will demo Level 1 – 4??

.....

These folks are kindly asked to bring a snack to share for the coffee break or a piece of wood for the raffle. Thank you.

<p><b><u>Goodies – November</u></b></p> <p>Herberts, Hiebert, Hughes, Isaak, Kaarsemaker and Kealy</p>	<p><b><u>Wood Rotation – November</u></b></p> <p>Briggs, Broomhead, Brown, Browne, Burgess and Burke Please write the <b>Species</b> on the donated Good wood.</p>
<p><b><u>Goodies – December</u></b></p> <p>Xmas Party. All those attending please bring some goodies to share with all.</p>	<p><b><u>Wood Rotation – December</u></b></p> <p>Xmas Auction. Please consider donating a Xmas ornament or woodturned item for the auction.</p>

<p><b><u>Cleanup Rotation – November</u></b></p> <p>Medeiros, Meier, Monkman, Murphy and Murphy.</p>
--

**BOWRIVER PRESIDENTS "THEME" CHALLENGE**

This month is a Nut Bowl with or without the Nutcracker. So get cracking.

**WEBSTER'S CORNER:** Club Website: <http://www.lanslide.com/fvwg>

Check out our interesting sites. Click on LINKS and check them out. Looking for Woodchuckers website?

Ask John to mail you a catalogue. Website: <http://www.woodchuckers.com>

The education page is always looking for more woodturning articles. If anyone has articles he or she would like published, e-mail a copy to Colin at: [c\\_delory@uniserve.com](mailto:c_delory@uniserve.com) or mail him a copy. His address is on the paid members list.

**EXECUTIVE/COMMITTEE 2003/2004**

President – Perry Niehaus – 604-850-8939 or email: [pniehaus@laservalley.com](mailto:pniehaus@laservalley.com)

Past Pres. – Murray Harris – 604-826-8439 or email: [nomurra@excite.com](mailto:nomurra@excite.com)

Vice President – Ian Fulford – 604-856-1839

Program Coordinators – Sam Nelson and Keith Bennett

Focus on Fundamentals Coordinator – Paul Wiebe – 604-856-5432 or email: [p.wiebe@telus.net](mailto:p.wiebe@telus.net)

Newsletter Editor – Margaret Eisenman – 604-462-8665 or email: [fatboy\\_classic@shaw.ca](mailto:fatboy_classic@shaw.ca)

Web Master – Colin Delory – 604-576-1172 or email: [c\\_delory@uniserve.com](mailto:c_delory@uniserve.com)

Membership Chair Person – Colin Delory

Photographers - Murray Sluys and Ross Patterson

Special Events Photographer – Kelly Maguire – 604-826-9291 or email: [riverwynd@telus.net](mailto:riverwynd@telus.net)

Treasurer – Gerry Blenkarn – email: [gerthebear@hotmail.com](mailto:gerthebear@hotmail.com)

Librarian – Brian Murphy – 604-858-8083

Social Conveners – Bill Olsen and Al Giesbrecht

Raffle – Wayne Cunningham and Peter Dykstra

.....  
**EDITORS CORNER:**

If you have any articles, **Wanted** or **For Sale** Ads, that you would like published in the next newsletter or any future newsletters, then email to [fatboy\\_classic@shaw.ca](mailto:fatboy_classic@shaw.ca), fax: 604-462-9173, phone 604-462-8665 or snail mail: 12670 Carr Street, Mission, BC V4S 1B9. Attention: Margaret All classifieds or articles must be in my possession no later than the **30<sup>th</sup> of each month** to be published in the next consecutive newsletter. Thank you.

Our mailing address:

FVWG  
Box 716  
Abbotsford, B.C. V2S 6R7

.....  
**REMINDER:**

**Dues are due**, so bring your cheque book or cash. We have 38 paid members to date. Three of these were new members. Welcome aboard.

.....

### 2003/2004 PRESIDENT'S "THEME" CHALLENGES

- November: Nut Dish
- December: Xmas Party held Dec. 11<sup>th</sup> at the Fraternal Order of Eagles, 33868 Essendene, in Abbotsford. This is a Pot Luck function, so please bring a food dish that can be shared. Please consider donating a woodturned piece for our auction. All proceeds are to donated 50/50 to the Care Bears of the World and the Abbotsford Food Bank.
- January: Plate
- February: Walking Stick or Cane
- March: Vase
- April: Bottle/Wine Stopper
- May: Spinning Top – Hope we see a demo on these.
- June: A Bell that rings or a Rattle that makes noise and is shaped like a Bell.  
\*\*\*\*\*

### CALENDAR OF EVENTS

- November: Marco Berera will Demo Lattice design for Turnings
- December: Dec. 11<sup>th</sup> is our Xmas Party. Start time 7 p m
- January: Jim Peardon will do a Demo on Turning a Wooden Bracelet.
- February: Hands On Turning
- March, April and June: We have 3 guests lined up, but we don't have confirmed commitments as to which month they will be allocated. At this time we don't have an out of town Turner signed up. Will advise at a later date.
- May: Scot Belway will talk about sanding, finishing techniques, different finishes and waxes.

#### MENTORS LIST:

You may contact any of the following persons if you require help or need advice.

David Broomhead (Langley) 604-533-1142  
Bill Isaak (Abbotsford) 604-850-0452  
John Krieger (Mission) 604-826-7796  
Ross Paterson (Chilliwack) 604-858-3953  
Jim Peardon (Abbotsford) 604-852-1645  
Bob Burke (Chilliwack) 604-792-2866

Colin Delory (Surrey) 604-576-1172  
Herb Reeve (Abbotsford) 604-853-2622  
Margaret Eisenman (Mission) 604-462-8665  
Paul Wiebe (Aldergrove) 604-856-5432  
Ian Fulford (Abbotsford) 604-856-1839

.....

**FRIENDS OF FVWG:**

These fine retailers have donated items for our monthly raffles: space for meetings and/or equipment for demonstrations. They deserve our consideration when we make purchases that they can supply.



Rona Home Centre's 34530 McConnell Rd., Abbotsford, BC



[www.kmstools.com](http://www.kmstools.com)

110 Woolridge St., Coquitlam, BC and 30824 South Fraser Way, Abbotsford, BC



[www.leevalley.com](http://www.leevalley.com)

1401 United Blvd., Coquitlam, BC and 1180 S.E. Marine Drive, Vancouver, BC



(Langley and Fleetwood Outlets)

**Bow River Craft Woods** 604-795-3462 [www.bowrivercraftwoods.com](http://www.bowrivercraftwoods.com) or email: [bowriver@cwk.imag.net](mailto:bowriver@cwk.imag.net) address: 11443 McSween Road, Chilliwack, B C

**Laser Valley Technologies Corp.** (Langley) [www.laservalley.com](http://www.laservalley.com)

Supplier of our paper and printer toner so that our Newsletter gets printed every month.

Neufeld Hardwoods (Agassiz) will advise on new phone number

Mohawk Western Finishing Supplies

Reimer Hardwoods, Peardonville Road, Abbotsford

Summit Tools 3905 E. 1<sup>st</sup> Ave., Burnaby, B.C. 604-294-1799 [www.summit-tools.com](http://www.summit-tools.com)

**CLASSIFIEDS**

<p><b>FOR SALE:</b>          Canwood Woodturning Lathe, 14" X 40"          Variable Speed, 1 HP, 110 V or 220 V,          Super Nova Chuck with 1", 2" &amp; 4" jaws, 6"          Faceplate, Boring Bar and 7 assorted          Chisels \$500.00          Call Jim at 604-864-2845</p>	<p><b>FOR SALE:</b>          6' Sears Drill Press \$150.00          Phone Wayne Cunningham          @ 604-853-9034</p>
--	--

**CALENDAR OF MEETING DATES FOR:**

MONTH	Fraser Valley Woodturners Guild Thursday	Fraser Valley Woodworkers Guild Wednesday	Greater Vancouver Woodturners Wednesday	Fraser Valley Woodcarvers Wednesday
November	13 <sup>th</sup>	5 <sup>th</sup>	26 <sup>th</sup>	12 <sup>th</sup> & 26 <sup>th</sup>
December	11 <sup>th</sup>	3 <sup>rd</sup>	-	10 <sup>th</sup> & ??
January	8 <sup>th</sup>	7 <sup>th</sup>	28 <sup>th</sup>	14 <sup>th</sup> & 28 <sup>th</sup>
February	12 <sup>th</sup>	4 <sup>th</sup>	25 <sup>th</sup>	11 <sup>th</sup> & 25 <sup>th</sup>
<b>March</b>	<b>4<sup>th</sup></b>	<b>3<sup>rd</sup></b>	<b>31<sup>st</sup></b>	<b>10<sup>th</sup> &amp; 24<sup>th</sup></b>
April	8 <sup>th</sup>	7 <sup>th</sup>	28 <sup>th</sup>	14 <sup>th</sup> & 28 <sup>th</sup>
May	13 <sup>th</sup>	5 <sup>th</sup>	26 <sup>th</sup>	12 <sup>th</sup> & 26 <sup>th</sup>
<b>June</b>	<b>3<sup>rd</sup></b>	<b>3<sup>rd</sup></b>	<b>22</b>	<b>9<sup>th</sup> &amp; 23<sup>rd</sup></b>
	Meetings are held in the Woodwork Shop at Yale Secondary School in Abbotsford. (Old Yale Road and McMillan) Start Time: 6:30 PM	Career Technical Centre 2272 Windsor Street, Abbotsford Demo's start at 6:20 PM Start Time: 7 PM	Meetings are held at the Sapperton Hall, 318 Keary Street, New Westminster Start Time: 6:30 PM	Meetings are held in the Woodwork Shop at Yale Secondary School in Abbotsford. (Old Yale Road and McMillan) Start Time: 6:30 PM

Article submitted by Wayne Pilchak

**CA Glue Hazard Warning**

CA Glue fires, and a recent discussion about the hazard potential of large bottles of CA. A qualified expert on CyanoAcrylate glue has asked me to bring the following safety information to the attention of woodworkers:

"CyanoAcrylate adhesive (CA) safety information

CyanoAcrylate is unlike the other woodworking adhesives we use and it requires some special handling. CA in the bottle is a very small, very reactive molecule. It doesn't become an adhesive until it cures. Curing involves a chemical reaction between the small molecules to make very large molecules (polymer). The special properties of polymers enables cured CA to become an adhesive. The curing reaction gives off large quantities of heat. For example, less than 4 oz of CA will produce 15,000 calories of heat during curing. The heat given off by a small dab of CA curing slowly is dissipated and it is not noticed. But, if a larger quantity of CA cures quickly , enough heat can be given off to boil and /or decompose the CA with the production of noxious and probably toxic fumes as well as the possibility of fire or explosion.

Cont.....

### CA Glue Hazard Warning continued

An accelerator (catalyst) will cause CA to quickly cure and lead to these potential hazards. In addition to the accelerator one can buy to purposely cause CA to quickly cure, many other substances act as accelerators. Many dyes will be excellent accelerators, and even water or glass can cause CA to cure rapidly. An extremely tiny amount of accelerator can lead to the rapid cure of a whole bottle of CA. The bottle would explode if it rapidly cured.

To avoid possible problems with CA don't store large quantities, at least in the same bottle. Don't ever add anything to CA unless you first test with a very small quantity of CA to see if the additive is an accelerator. The test should be done with good ventilation in case there is rapid cure, which leads to boiling, fumes and possibly fire. Don't transfer CA to a different container from which it was originally packaged. The new container could contain something that could act as an accelerator.

Bottom line: Be cautious handling anything more than a drop of CA and never add anything to a larger quantity of CA that could lead to a rapid cure."

{One other point that has not been mentioned: The fumes that are given off can severely irritate the eyes, so wear proper eye protection.}

\*\*\*\*\*

### What should you look for when buying a Wood Turned Piece?

1. **Shape.** The shape must be pleasing to the eye. Using the natural form of the wood is often the best shape for the turned vessel.
2. **Balance.** If the proportions are off then the shape will be unbalanced.
3. **Turning quality.** The wall thickness should be uniform, though the base and rim can be a little thicker.
4. **Finish.** Your own preferences. Natural finishes allow the wood texture to be seen and the surface should be as smooth as a baby's bottom. Do not leave sanding marks. High gloss looks and feels like plastic. Wood should look and feel like wood. If you use varnish then it should be absolutely smooth and preferably matte.
5. **Machine Marks.** How was the piece held on the lathe? Can you tell? A vessel that shows no signs is superior to one that does.
6. **Material.** Wood species? Common or rare? Is it a Burl? Does it have knots or inclusions? Are there checks or cracks in the wood? Burls are full of holes and bark inclusions, that's what makes them interesting. Slight imperfections can enhance the beauty of the piece.
7. **Function.** Is the vessel functional or is it ART? How will you use it?
8. **Uniqueness.** No two pieces of wood turnings will ever be exactly the same. Some Turned pieces are Unique and as such, they are simply beautiful to behold.
9. **Name.** Do you know the woodturner? Some Art Collectors would rather buy bad art from a famous artist than great art from an unknown one. If you are investing in his name you may want to buy from an unknown (but accomplished) craftsperson/artist because the price is right and you are investing in the possibility of future fame.

**This article has been altered from the original that was submitted. Due to liabilities I will not publish articles without the written consent of the Original author.**

**Please Note: This is one persons opinion. If you would like to submit your opinion on this topic, please do so.**

**Minutes of the Executive Meeting held October 27<sup>th</sup>, 2003.**

1. Focus on Fundamentals. Ted Lightfoot will demo Level 1 – 4 and Paul Wiebe will demo Level 2 –2 on Sharpening.
2. Our November demo will be Marco Berera showing us how to do lattice work on Turnings.
3. Sam Nelson is still working on our next years program. Who will we be getting for our Special Demo, regrettfully it will not be Don Derry. We will advise as soon as we have confirmation.
3. Our Xmas Party will be held on Dec. 11<sup>th</sup>, if we can get the Hall rental for this date. Perry Niehaus is to book and pay for the rental of the Hall. The party will be held at the Fraternal Order of Eagles. Address: 33868 Essendene, Abbotsford, B C. Time 7 p m.  
We will be inviting the Abbotsford Woodcarvers to our function. This event is Pot Luck and all members attending are asked to bring one food dish that can be shared by all.  
Please consider donating a Turned piece for the Auction. All proceeds are donated 50/50 to the Care Bears of the World and the Abbotsford Food Bank.
4. We will set up a booth at the Trade X for the March Boat/Sportsman Show. We will sell raffle tickets and do Demo's. It was a lot of fun at the last one.
5. Margaret Eisenman has donated a video camera, to be used for recording and viewing our in-house demo's. This way everyone will be able to watch the demo on a TV when it gets too crowded around the Turner or Speaker. This is done at the Vancouver Guild with great success. Perry is checking out a reasonable TV to purchase.
6. Paul Wiebe will make a Trolley on wheels to transport our Mini Lathe and stand to our meetings and other functions. It was agreed that he will submit a bill for reimbursement when completed.
7. Ian Fulford said that we are invited to Oliver in the Spring to Turn wood. We would have to bring our own lathes, since the fellow only has one.
8. The Executive felt that the Hands-on Turning was a great success.
9. An inventory list has been completed and Ian Fulford is the Keeper of the list.
10. Colin Delory got prices from the different Host Servers so that we might get our own Website. It was approved that we would get our own Website so that we would be in better control. As of October 30<sup>th</sup>, Colin advised that our new Website will be <http://www.fvwg.ca>

While Colin is rebuilding our new site, our current one will still be active.

Attended by: Perry Niehaus, Bill Olsen, Paul Wiebe, Murray Harris, Ian Fulford, Wayne Cunningham, Keith Bennett, Sam Nelson, Margaret Eisenman and Colin Delory.

## GENERAL NEWS

### Instrument Wood Orders

The gentlemen who contacted me about supplying the instrument wood was preparing to go on a month long trade show to Japan and China when I got back to him. We agreed to wait until his return, which should be imminent, to organize the deal.

I will advise when we are proceeding. We have, collectively, a rather large order (1pallet load) and we will likely need some pickup capacity. I think it may be best if people can "group" themselves and arrange to collect their quota. The total cost of the transaction is large at about \$2,500/3,000. It is therefore very important that people commit to their orders. If anyone wishes to cancel or revise (downwards) they must let me know by the end of this month – November.

Any ideas on a drop-off venue, which likely will be during a weekday, will be gratefully considered.

**David Broomhead** phone: 604-533-1142 or e-mail: [broomhead@shaw.ca](mailto:broomhead@shaw.ca)

\*\*\*\*\*

We had an excellent turn out at our last meeting. The hands-on turning was quite a success and it looked like everyone was enjoying themselves.

We had two new members sign up at the October meeting, welcome John Gregson from Abbotsford and Eric Munshaw from Chilliwack.

At the September meeting, we had three new members sign up, welcome Duane Anderson from Mission, Marco Berera from Richmond and George Guerts from Chilliwack.

\*\*\*\*\*

There was lots of Woodturnings for sale at the Spinners & Weavers Show. I was there on Sunday and the morning Turning Demo. Eleanor said sales were slow. I took a few pictures of the large table display.

The Cloverdale Woodworking Show was another success. It was extremely hard to keep my money in my wallet. I'm glad I don't have any more room for equipment. I took some pictures of the Woodturners Competition. Not all turned out but I think I have a good selection. Apparently the Vancouver Guild took individual pictures of all the Turnings and will be putting them on CD. At a nominal cost we can purchase one for our Library??? when it becomes available.

\*\*\*\*\*

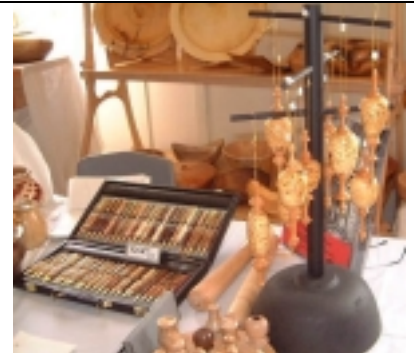
Don't forget to sign up to Demo at the new KMS Tools in Abbotsford. Our first Demo Days is November 15<sup>th</sup>, starting at 10 am.

\*\*\*\*\*

Just a reminder that membership renewals are DUE. Cost is \$35.00 per year for adults and \$10.00 per year for students. We now have 50 paid members to date.



SPINNERS & WEAVERS WOODTURNERS TABLES



WOODTURNERS COMPETITION 2003



Paul Wiebe  
3<sup>rd</sup> Place in  
Intermediate



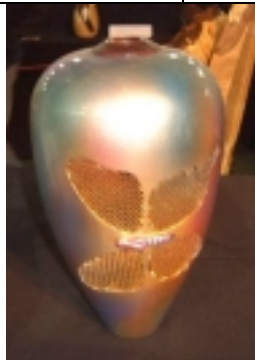
Novice Winners



Don Derry 1<sup>st</sup> Place in Open and  
Peoples Choice



Colin  
Delory  
  
Open  
Division



Marcos  
Berera  
  
Open  
Division



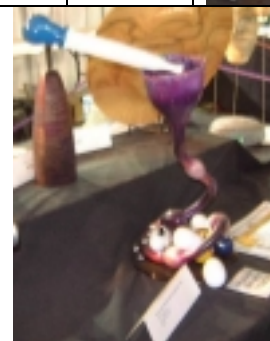
<<<  
Peoples  
Choice  
  
>>>>  
3  
Heads  
  
Open  
Division



Intermediate Division



Open Division



Open Division

The piece on  
the shelf is Art  
Liestman's  
who placed 2<sup>nd</sup>  
in Open.  
The strange  
looking piece  
received an  
award for  
Originality.